



Fullcircle

MODULAR SHELL SCHEME



SHELL SCHEME PACKAGE

Your modular shell scheme stand will be constructed using a **2.5m high Click Modular System** and consist of **white melamine** wall panels, framed in anodised aluminium at **1m centres** (0.75m, 0.5m and 0.25m centres may be necessary depending on stand layouts).

Fascia panels will be provided on open sides, supported by aluminium posts at the corners and at mid-points where necessary. The maximum distance between support posts is **4m**. An identification panel with your exhibitor name and stand number will be provided. **Ceiling battens** will be positioned in the stand where necessary to give the structure increased rigidity.

MODULAR SHELL SCHEME

Shell Scheme Features



Wall Panels

Wall panels are available to match the shell scheme and provide partitioning, offices, storerooms etc. Sizes are 2.5m high and available in widths of 1m, 0.75m, 0.5m and 0.25m.

Dwarf Wall

Dwarf wall panels are available to match the shell scheme and provide partitioning. Sizes are 1m high and available in widths of 1m, 0.75m, 0.5m and 0.25m.

Door Section

Lockable door sections are 2.5m high x 0.75m wide.

Curtain

Curtain entrance sections are 2.5m high x 1m wide with an opening of 2m high.

Sloping Shelf

Shelves are constructed from white melamine and fix to brackets inserted into aluminium uprights. Sizes are 1m & 2m lengths x 0.3m wide with front lip.

Flat Shelf

Shelves are constructed from white melamine and fix to brackets inserted into aluminium uprights. Sizes are 1m & 2m lengths x 0.3m wide.

Garment Rail

Garment rails fix to aluminium uprights. Sizes are 1m & 2m lengths set at 0.3m or 0.4m from the wall.

Waterfall Garment Rail

Waterfall garment rails fix to aluminium uprights and have 13 notches.

Worktop

Melamine worktops with supports.

Muslin Ceiling

White muslin ceilings. (other colours are available).

Platform/Floorflats

Raised platforms (covering required) with a black painted skirting are a convenient way to route electrics, plumbing or other cable runs to areas in the centre of the stand.

MDF Clad

MDF cladding can be provided to give a clean smooth look to the walls.

Slat Wall

Slat walling can be provided to give more flexibility for displaying products and services. (Hooks and fittings not included).

Night Sheet

Night sheets can be supplied, complete with padlocks, securing the open sides of stands.



MODULAR SHELL SCHEME

Shell Scheme Enhancements



Glass Panel

1

Glass panels can be fitted on the perimeter of your stand and can be further enhanced with applied graphics. Typical applications are silver etched effect PVC or full colour profile cut logos. Please contact us for further details and prices.

Panel graphics

2

Individual graphic panels, offer you a **full height** graphic display whilst allowing additional fixtures to be fastened to the shell scheme uprights. The graphic panels are **fitted within** the click shell scheme system. The visual area on a full panel is 2.370m high x 0.945m wide.

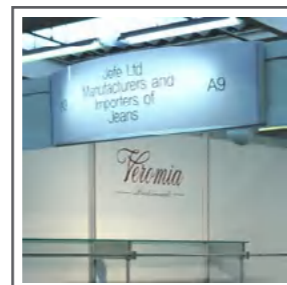
Graphic Clad

3

A full graphic clad, offering you an **uninterrupted** graphic display for your shell scheme. The graphic clad panels are **fixed in front** of the shell scheme posts using a purpose-made extrusion. The panels are 2.44m high.

ENHANCE YOUR STAND

To maximise impact and give your stand that unique look, order either individual graphic panels or graphic clad finish for your shell scheme walls. These will be fitted by us prior to your arrival.



Curved Illuminated Nameboard

4

The curved illuminated nameboard measures 1.5m in length and fits to the full height of the fascia panel. It displays both your exhibitor name and stand number. (Please note you must have ordered other electrical items to be able to order this nameboard).



High Level Corner Graphic Panel

5

This graphic panel can be fitted to the corner of your shell scheme on an extended corner post displaying both your exhibitor name and stand number. (Only available on external corner).



Illuminated Lightbox

6

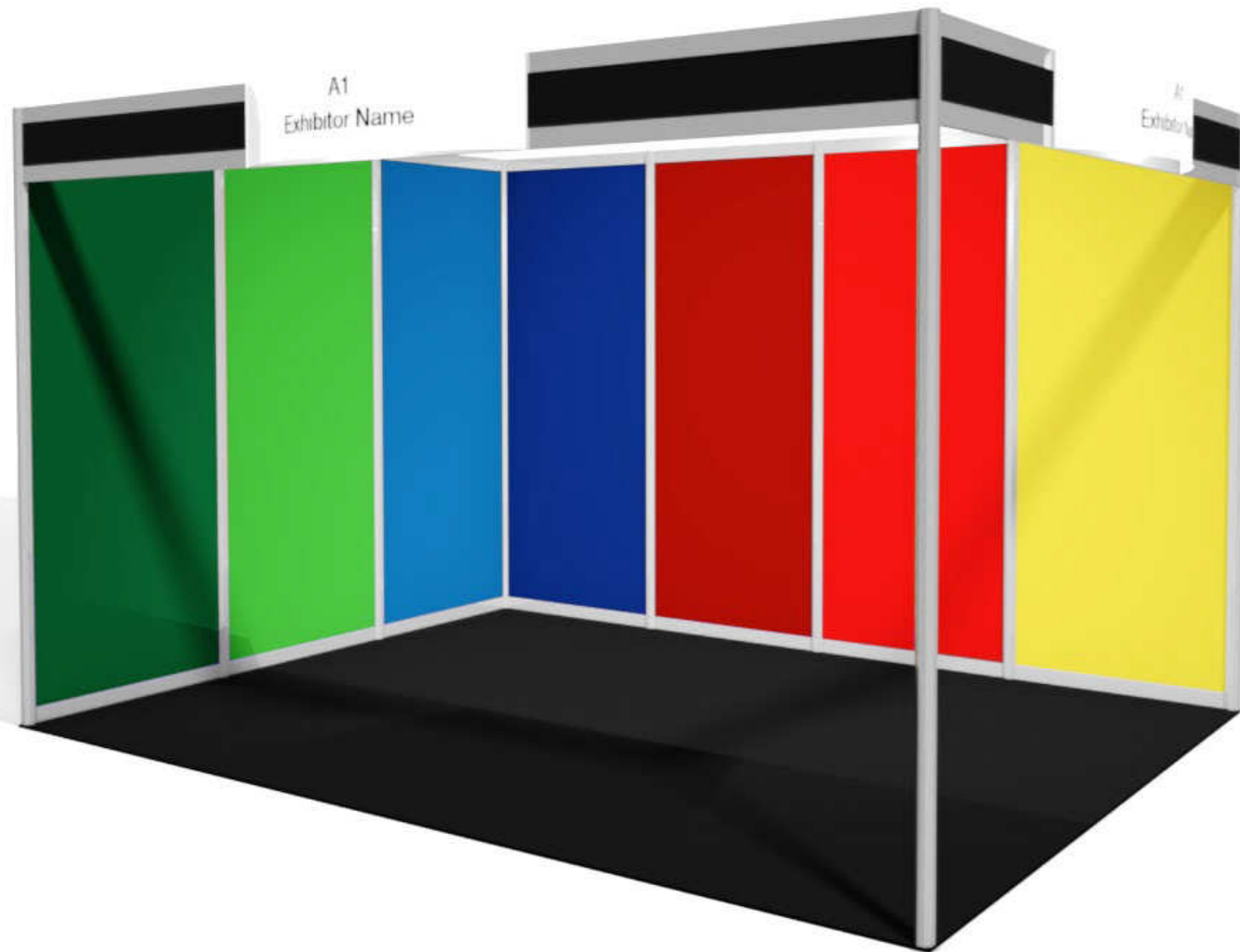
Fixed at a right angle to the fascia board, it allows your exhibitor name and stand number to be easily visible when visitors approach your stand. (Please note that you must have ordered other electrical items to be able to order this nameboard).



Fullcircle

MODULAR SHELL SCHEME

Loop Nylon



Snow

Nearest Pantone: White



Alfa Red

Nearest Pantone: 185



Cherry

Nearest Pantone: 187



Royal Maroon

Nearest Pantone: 229



Light Grey

Nearest Pantone: 435



Silver

Nearest Pantone: 406



Dove

Nearest Pantone: 417



Graphite

Nearest Pantone: 425



Barley

Nearest Pantone: 7500



Sahara Sand

Nearest Pantone: 7502



Ripe Banana

Nearest Pantone: 123



Light Blue

Nearest Pantone: 285



Monsoon

Nearest Pantone: 277



Military

Nearest Pantone: 2925



Cornflower

Nearest Pantone: 2945



Exhibit Blue

Nearest Pantone: 072



Oxford

Nearest Pantone: 295



Ink

Nearest Pantone: 296



BA Navy

Nearest Pantone: 289



Black

Nearest Pantone: Black



Putting Green

Nearest Pantone: 7482



Dock

Nearest Pantone: 364



Emerald

Nearest Pantone: 342



Wimbledon Green

Nearest Pantone: 350



LOOP NYLON

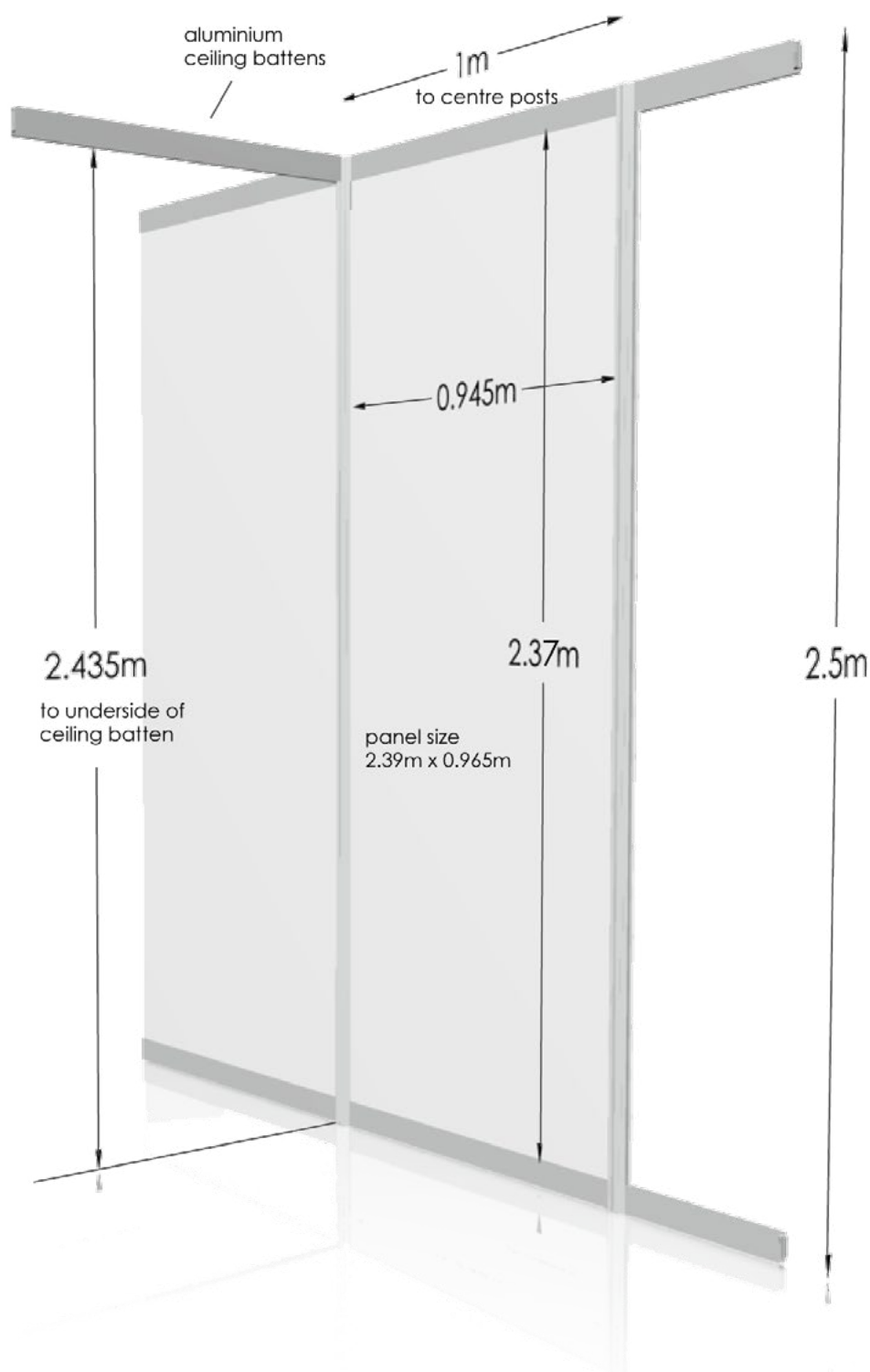
Looking for something different? Why not enhance your shell scheme by changing the colours of your wall panels by having them covered in display loop nylon.



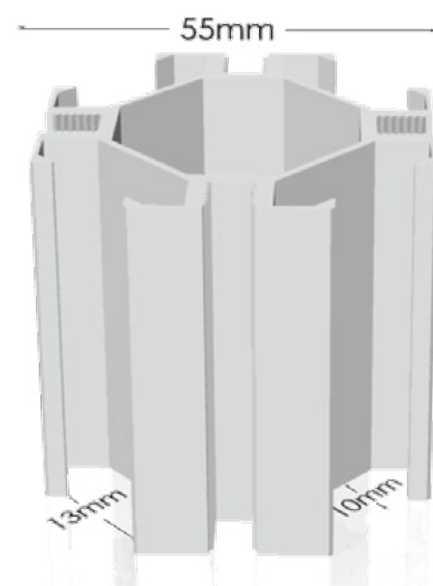
Fullcircle

MODULAR SHELL SCHEME

Technical Specification



POSTS



RAILS

